



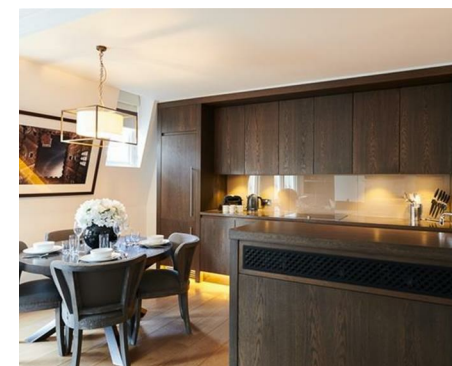
Let **UK** Home

1 Bedrooms

Flat

Located in London

£10,833 Per Month



info@letukhome.co.uk

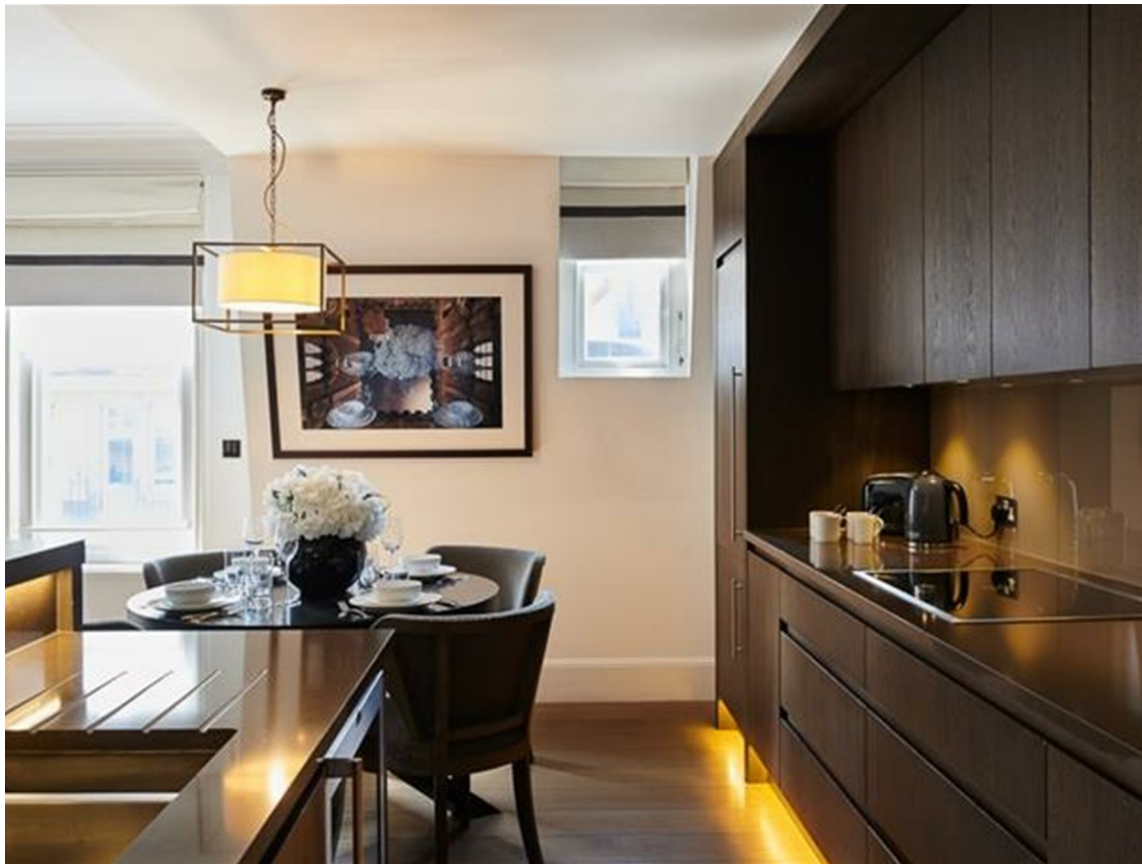
<https://www.letukhome.co.uk/>

01795 358 886



65 Duke Street, Mayfair London

W1K 5NX



Let UK Home are excited to offer this superbly refurbished one-bedroom, north west facing apartment situated on the third floor within this six-storey Grade II listed, Victorian red brick building located in the heart of Mayfair.

The apartment has been decorated and finished to the highest of standards with modern finishes whilst retaining its original Grade II listed features such as fireplaces & cornicing from the original building.

The apartment further benefits from double doors from the hallway leading onto an open plan reception room & kitchen offering elegant living and entertaining space, guest cloakroom, utility room with Miele appliances. The master bedroom benefits from a dressing room and an en-suite bathroom featuring a free-standing bath. The building comprises on-site concierge, comfort cooling, lift service, a storage cupboard with each apartment located on the lower ground floor and an emergency out of hour's service.

Mayfair allows easy access to the rest of London. Nearby underground stations include Bond Street (Central and Jubilee lines), Marble Arch (Central Line), Green Park (Jubilee, Piccadilly, and Victoria lines) and several regular and varied bus services further improve accessibility. Residential Land is the owner and managing agent of this property. All our tenants benefit from a dedicated building manager who is on hand to assist with any property-related issues. We also employ a dedicated team of maintenance experts and provide a 24-hour emergency helpline.

65 Duke Street, Mayfair London

£10,833 Per Month



- 3rd Floor
- Interior Designed | Set over 1,000 Sq Ft
- Creston Automated System | Central Mayfair Location
- 24-Hour Emergency Helpline | Lift Service
- EPC Rating: C
- Dressing Room | Freestanding Bath | Superfast Broadband
- On-Site Building Manager | CCTV | Pet Friendly
- Flexible Rental Terms | Available Furnished & Unfurnished



THIRD FLOOR



Let **UK** Home

3F 2 Eastbourne Terrace

Paddington

London

W2 6LG

01795 358 886

info@letukhome.co.uk

Council Tax Band: G

Local Authority:

Agents Note: Whilst every care has been taken to prepare these particulars, they are for guidance purposes only. All measurements are approximate and are for general guidance purposes only and whilst every care has been taken to ensure their accuracy, they should not be relied upon and potential buyers/tenants are advised to recheck the measurements.

Energy Efficiency Rating		Current	Potential
Very energy efficient - lower running costs			
(92 plus) A			
(81-91) B			
(69-80) C			
(55-68) D			
(39-54) E			
(21-38) F			
(1-20) G			
Not energy efficient - higher running costs			
England & Wales		74	82
	EU Directive 2002/91/EC		

<https://www.letukhome.co.uk/>